

# Powders

*Our powder capabilities range from servicing vertical markets such as laundry, foodservice/hospitality, automotive, and floor care. With a full powder manufacturing facility that can produce spray-dried and blended powders at our disposal, we are able to produce quantities fit for any job or request.*

*No matter which of these markets you're in, we are confident that any of our powder programs will exceed your expectations and be the right product for the job!*





## LAUNDRY - DETERGENTS



### ULTRA BURST

#### Low Suds Laundry Detergent

- Biodegradable and phosphate free
- Hypo-allergenic laundry detergent

**PRODUCT:** 109235  
**DILUTION:**  
 3/8 - ¾ cup per load  
**pH:** 10.0 - 11.0  
**FORM:** Powder  
**SCENT:** Odorless  
**COLOR:** White  
**PACKAGING:**  
 40 lb. pail



### WHITE BRITE BEADS

#### Spray Dried Laundry Detergent

- Super concentrated, low-foaming laundry detergent
- Penetrates deep set stains and lifts them away
- Contains optical brighteners to enhance colors and whites

**PRODUCT:** 100148  
**DILUTION:**  
 ¼ - 4 cup per load  
**pH:** n/a  
**FORM:** Powder  
**SCENT:** Odorless  
**COLOR:** White  
**PACKAGING:**  
 50 lb. box



### FRESH BURST®

#### Color-Safe Laundry Detergent

- Color-safe laundry detergent; It is free-flowing powder that dissolve easily
- Designed for laundries, hospitals, institutions, and commercial use
- It's built to eliminate the lime soap film and grey work prevalent in hard water areas.
- Provides excellent soil suspensions, penetrates deep-set soil stains, and rinses easily even in cool water

**PRODUCT:** 109245  
**DILUTION:**  
 ¼ - 1 ¼ cups per load  
**pH:** 11.0 - 11.5  
**FORM:** Powder  
**SCENT:** Lemon  
**COLOR:** White  
**PACKAGING:**  
 32.5 lb. pail



### BURST®

#### Color-Safe Laundry Detergent

- Designed for laundries, hospitals, institutions and, commercial use
- Complete one-shot heavy-duty detergent
- Low suds

**PRODUCT:** 100404  
**DILUTION:**  
 1 - 4 cups per load  
**pH:** 8.0 - 9.0  
**FORM:** Powder  
**SCENT:** Lemon  
**COLOR:** White with Blue Specs  
**PACKAGING:**  
 40 lb. pail



### OXY POWER BLEACH

#### All-Fabric Oxygen Bleach

- All-fabric oxygen bleach that does not contain chlorine
- Powdered oxygen bleach for commercial laundry
- Safe for all washable fabrics, including whites and colors

**PRODUCT:** 1005078  
**DILUTION:**  
 ½ - 1 cup per 100 lb. load  
**pH:** 9.8 - 10.5  
**FORM:** Powder  
**SCENT:** Odorless  
**COLOR:** White  
**PACKAGING:**  
 45 lb. pail



### OXY-D™

#### Powder Detergent with Color-Safe Bleach

- Heavy-duty detergent for all water temperatures and conditions
- Excellent soil suspension, penetrates and lifts away deep-set soils
- Whitens and brightens, safe for whites and colorfast fabrics

**PRODUCT:** 100401  
**DILUTION:**  
 ½ - 1 cup per load  
**pH:** 10.5 - 11.5  
**FORM:** Powder  
**SCENT:** Odorless  
**COLOR:** White  
**PACKAGING:**  
 50 lb. pail



### SNOW BLEACH

#### Chlorinated Dry Laundry Bleach

- Designed for shirt laundries, linen supply, institutions, hospitals, commercial and laundries
- Destains white laundry fabrics

**PRODUCT:** 100142  
**DILUTION:**  
 ¼ - 1 cup per 100 lb. load  
**pH:** 9.5 - 10.5  
**FORM:** Powder  
**SCENT:** Chlorine  
**COLOR:** Off White  
**PACKAGING:**  
 50 lb. pail





## MACHINE DISH WASHING POWDER



### SPARKLE

#### Automatic Dishwashing Detergent

- Premium caustic extra heavy-duty chlorinated dish machine detergent
- Exceptional on hard water and eliminating film and mineral deposits
- Economical formulated

**PRODUCT:** 100010

**DILUTION:**  
3/16 cup per load

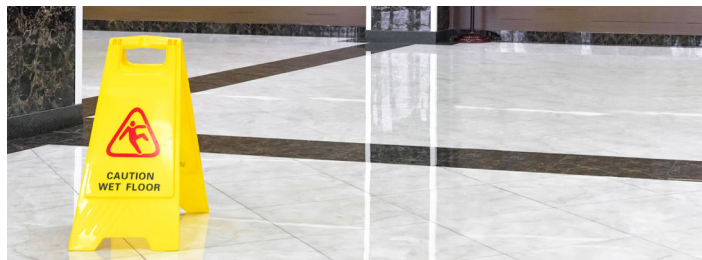
**pH:** 11.0 - 12.0

**FORM:** Powder

**SCENT:** Chlorine

**COLOR:** White

**PACKAGING:**  
50 lb. pail



## FLOOR CLEANER



### CLEAN STEP

#### Institutional Floor and All-Purpose Cleaner

- Heavy-duty, multi-purpose cleaner and detergent
- Ideal for floors and other foodservice uses
- Grease cutting formula and easy rinsing
- Cleans faster, eliminates yellowing, and can be used as a traffic lane pre-spotter.
- Brightens synthetics and safe for all colorfast colors.

**PRODUCT:** 100120

**DILUTION:**  
½ - 2 cups

**pH:** <11.0

**FORM:** Beads

**SCENT:** Fresh Island

**COLOR:** Light Green

**PACKAGING:**  
36 lb. box

## MANUAL SPRAY DRIED DETERGENTS



### PINK HIGH ACTIVE BUILT BEADS

#### Spray-Dried Dish and All-Purpose Detergent

- For sparkling clean dishes, china, silverware and more
- High power suds that last, cuts grease and lime build-up
- Mild on skin, tough on soils

**PRODUCT:** 100139

**DILUTION:**  
1/16 cup per sinkfull of water

**pH:** 11.0 1% Solution

**FORM:** Beads

**SCENT:** Lemon

**COLOR:** Pink

**PACKAGING:**  
50 lb. box



### WHITE WONDER SUDS

#### High Active Neutral Beads

- Hand dishwashing detergent
- Internal and external automobile washing
- Upholstery and rug cleaner

**PRODUCT:** 100125

**DILUTION:**  
1 cup per sinkfull of water

**pH:** n/a

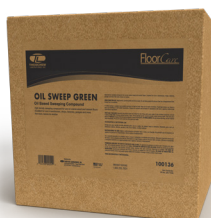
**FORM:** Beads

**SCENT:** Odorless

**COLOR:** White

**PACKAGING:**  
50 lb. box

## SWEEPING COMPOUNDS & DUST CONTROL



### OIL SWEEP GREEN

#### Oil Based Sweeping Compound

- High density oil based sweeping compound for use on coarse wood and cement floors
- Excellent for use in warehouses, shops, factories, garages and more
- Non-toxic, leaves no residue

**PRODUCT:** 100136

**DILUTION:**  
Ready-to-Use

**pH:** n/a

**FORM:** Beads

**SCENT:** Pleasant

**COLOR:** Green

**PACKAGING:**  
50 lb Box  
100 lb Box



### BUSY BEADS

#### All-in-One, All Purpose Spray-Dried Cleaner

- All-in-one, all purpose spray-dried cleaner
- Professional, versatile manual washing detergent
- Used for cleaning floors, walls, dishes, laundry and more
- Economical product for use in foodservice, healthcare, hotels, motels, schools, office buildings, industrial, commercial and even residential homes

**PRODUCT:** 101223

**DILUTION:**  
¼ cup per sinkfull of water

**pH:** 11.5 1% Solution

**FORM:** Beads

**SCENT:** Odorless

**COLOR:** Pink

**PACKAGING:**  
25 lb. box



### WAX-O-SWEEP

#### Wax Based Sweeping Compound

- Non-drying and non-spotting
- Dust control absorbent and deodorizer
- Use on all types of fine finished floors

**PRODUCT:** 100130

**DILUTION:**  
Ready-to-Use

**pH:** n/a

**FORM:** Beads

**SCENT:** Pleasant

**COLOR:** Green

**PACKAGING:**  
50 lb Box



## OVEN, GRILL & FRYER CLEANER

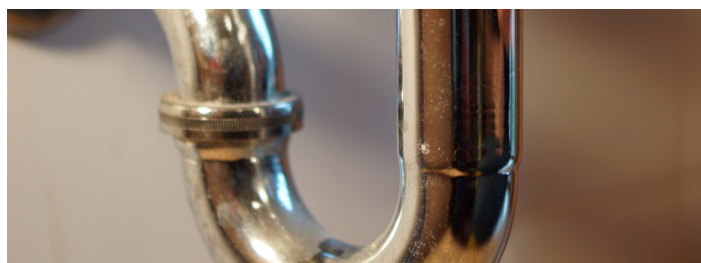


### DEEP FAT FRYER CLEANER

#### Fryer Boil-Out

- Heavy duty powder cleaner and degreaser for commercial fryers
- Effective cleans grease residue and carbon deposits
- Specifically formulated for the foodservice industry

**PRODUCT:** 100128  
**DILUTION:**  
 ½ cup per gallon  
**pH:** n/a  
**FORM:** Powder  
**SCENT:** Odorless  
**COLOR:** Light brown  
**PACKAGING:**  
 2/7 lb. cs



## DRAIN CARE

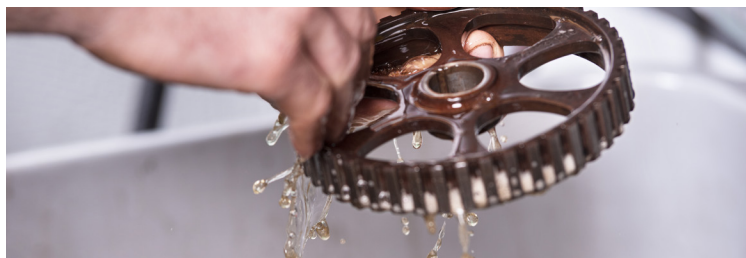


### SEWER SOLV

#### Sewer Line & Large Drain Cleaner

- Municipal sewer line and large drain cleaner
- Unclogs and maintains sewer lines in municipal systems and industrial plants
- Reacts quickly to dissolve grease and organic build-up
- Strong alkaline formula heats rapidly and stays hot to burn through clogs

**PRODUCT:** 100105  
**DILUTION:**  
 Ready-to-Use  
**pH:** 12.0 - 14.0  
**FORM:** Powder  
**SCENT:** Odorless  
**COLOR:** Red  
**PACKAGING:**  
 50 lb. pail



## AUTOMOTIVE PARTS CLEANER



### SPRAY PARTS CLEANER

#### Heavy Duty Powder Cleaner and Degreaser

- Heavy duty powder cleaner and degreaser
- Rapid cleaning for oil and grease-crusted parts
- Use with all spray wash systems
- Contains corrosion inhibitors
- Safe for use on virtually all metals

**PRODUCT:** 101607  
**DILUTION:**  
 2 - 20 cups per 10 gallons  
**pH:** 12.0 - 13.0  
**FORM:** Powder  
**SCENT:** Odorless  
**COLOR:** White  
**PACKAGING:**  
 50 lb. pail



### CLEAN SHOT CRYSTAL DRAIN OPENER

#### Professional Strength

- Odorless drain cleaner
- Activated by hot water only
- Strong alkaline formula
- Works in 60 seconds
- Dissolves built up grease, oils, hair, and soap scum

**PRODUCT:** 100107  
**DILUTION:**  
 Ready-to-Use  
**pH:** n/a  
**FORM:** Flakes  
**SCENT:** Odorless  
**COLOR:** White  
**PACKAGING:**  
 24/1 lb. jar

Distributed by:



#### CORPORATE HEADQUARTERS

7373 Rowlett Park Drive  
 Tampa, Florida 33610  
 P. 813.237.6463  
 F. 813.237.2059

#### POWDER DETERGENT PLANT

3780 Browns Mill Road S.E.  
 Atlanta, Georgia 30354  
 P. 404.767.7526  
 F. 404.767.7010



©2022 Theochem Laboratories, Inc.  
 A family company since 1961  
 Powders 07-2022

